

TRANSMITTAL OF DOCUMENTS

1/153 Victoria Road
GLADESVILLE NSW 2111

T 02 9420 3633
F 02 9420 3655
E ohd@qoh.net.au

Job No: **970**
Project: Eileen O'Connor Catholic College
Address: 3 Thomas Street, LEWISHAM, NSW
Client: Sydney Catholic Schools

Date of Issue

Day	11	22	18	13								
Month	05	08	10	11								
Year	17	17	17	17								

[illegible][illegible]

Reason for Issue / Method of Issue / Method of Delivery

[illegible]

DIRECTORS

E. O'Hanlon
B. Arch
NSW Reg. 4306

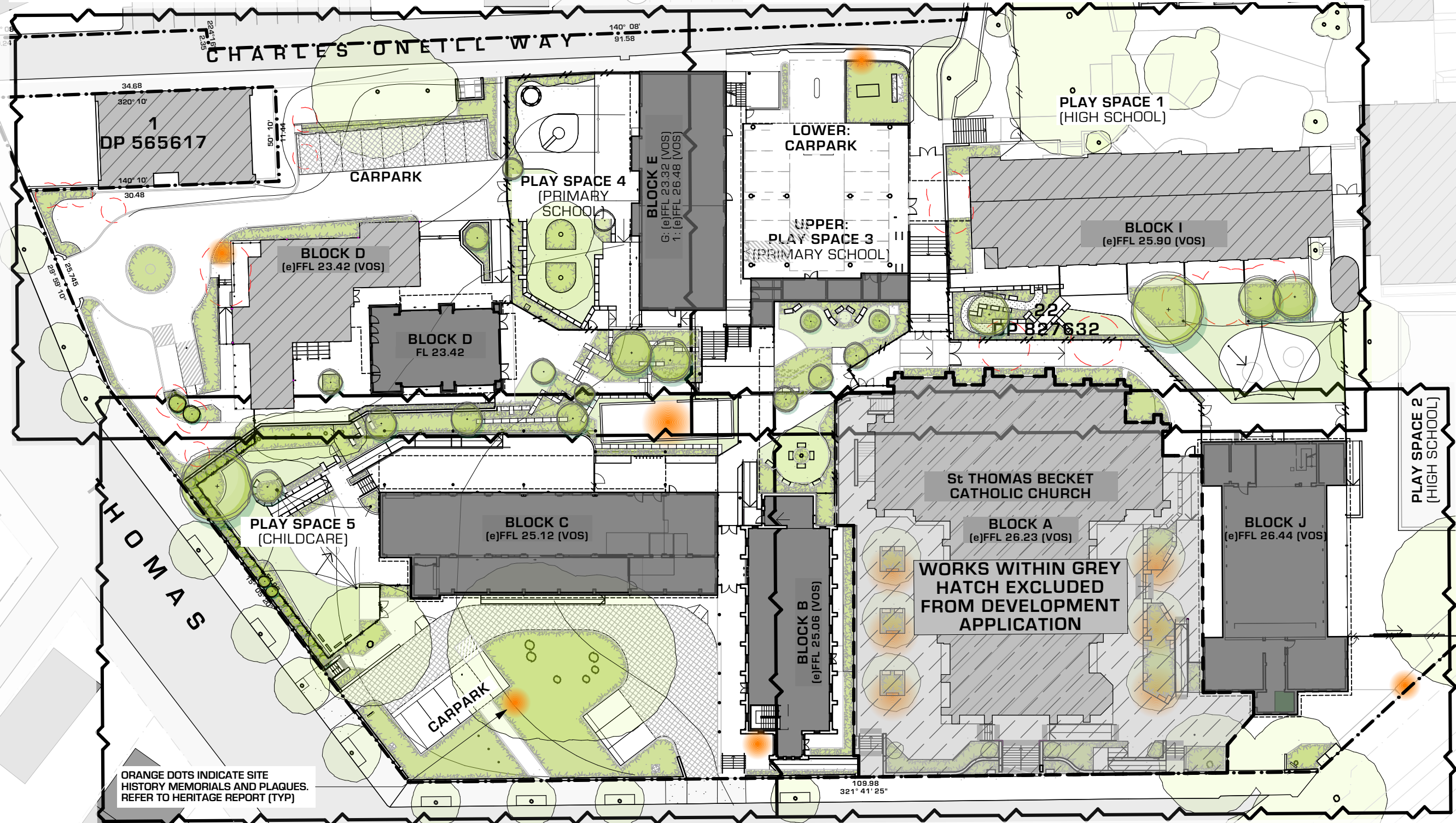
J. O'Hanlon
B. L. Arch
AILA Reg. 395

ASSOCIATE

W. Francis
B. L. Arch

REFER TO DA1810

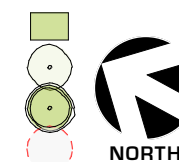
REFER TO DA1811 (LOWER) & DA1812 (UPPER)

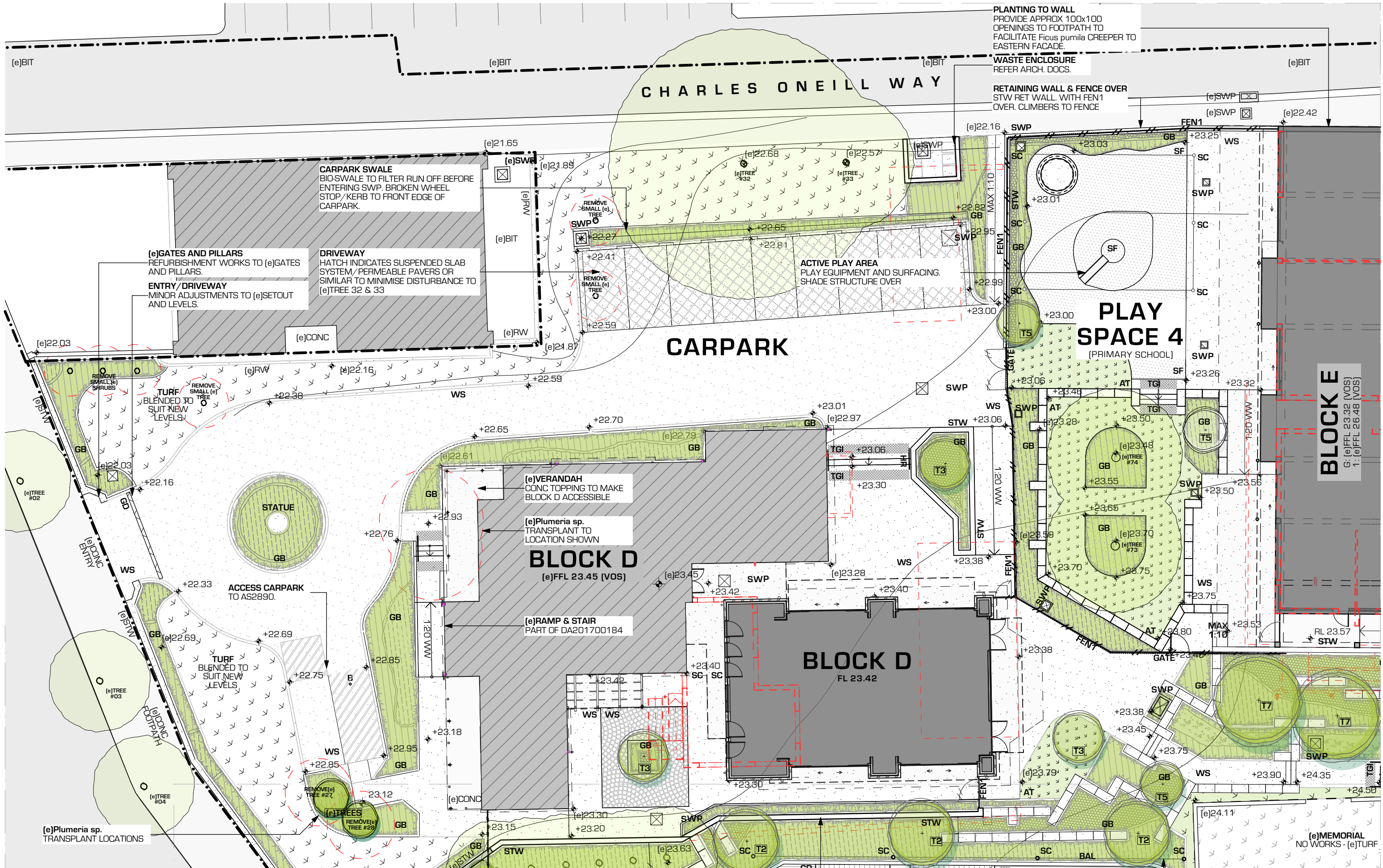


ORANGE DOTS INDICATE SITE HISTORY MEMORIALS AND PLAQUES. REFER TO HERITAGE REPORT (TYP)

REFER TO DA1813

REFER TO DA1814



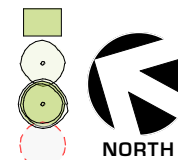


**LEGEND
NOTE:**

(e)	EXISTING	CK	CONCRETE KERB	SC	STEEL COLUMN
(n)	RELOCATED	CD	COMPOSITE DECKING	SCR	SCREEN FENCING
NEW	NEW	CONC	CONCRETE	SF	SOFTFALL
AT	ARTIFICIAL TURF	DP	DOWN PIPE	ST	SEATING
B	BOLLARD	FP	FLAG POLE	STW	STONE RET. WALL
BAL	BALLASTRADE	GB	GARDEN BED	SWP	STORMWATER PIT
BIT	BITUMEN	GD	GRADED DRAIN	TGI	TACTILE GROUND INDICATOR
BRK	BRICK	MSB	MAIN SWITCHBOARD	WS	HARD WEARING SURFACE
BR	BIKE RACK	PAV	PAVING	WVW	WALKWAY (1:20)
CC	CONCRETE COLUMN	RW	RETAINING WALL		

SYMBOL

GARDEN BED
EXISTING TREE
NEW TREE



JANE O'HANLON
O'HANLON DESIGN - DIRECTOR
AILA REGISTRATION NO. 395

13.11.17	REVISED FOR DA	D
18.10.17	REVISED FOR DA	C
22.08.17	REVISED FOR DA	B
11.05.17	ISSUE FOR DEVELOPMENT APPLICATION A	A
DATE	REVISION	ISSUE

DRAWN BY: WLF
CHECKED BY: TOH, WLF

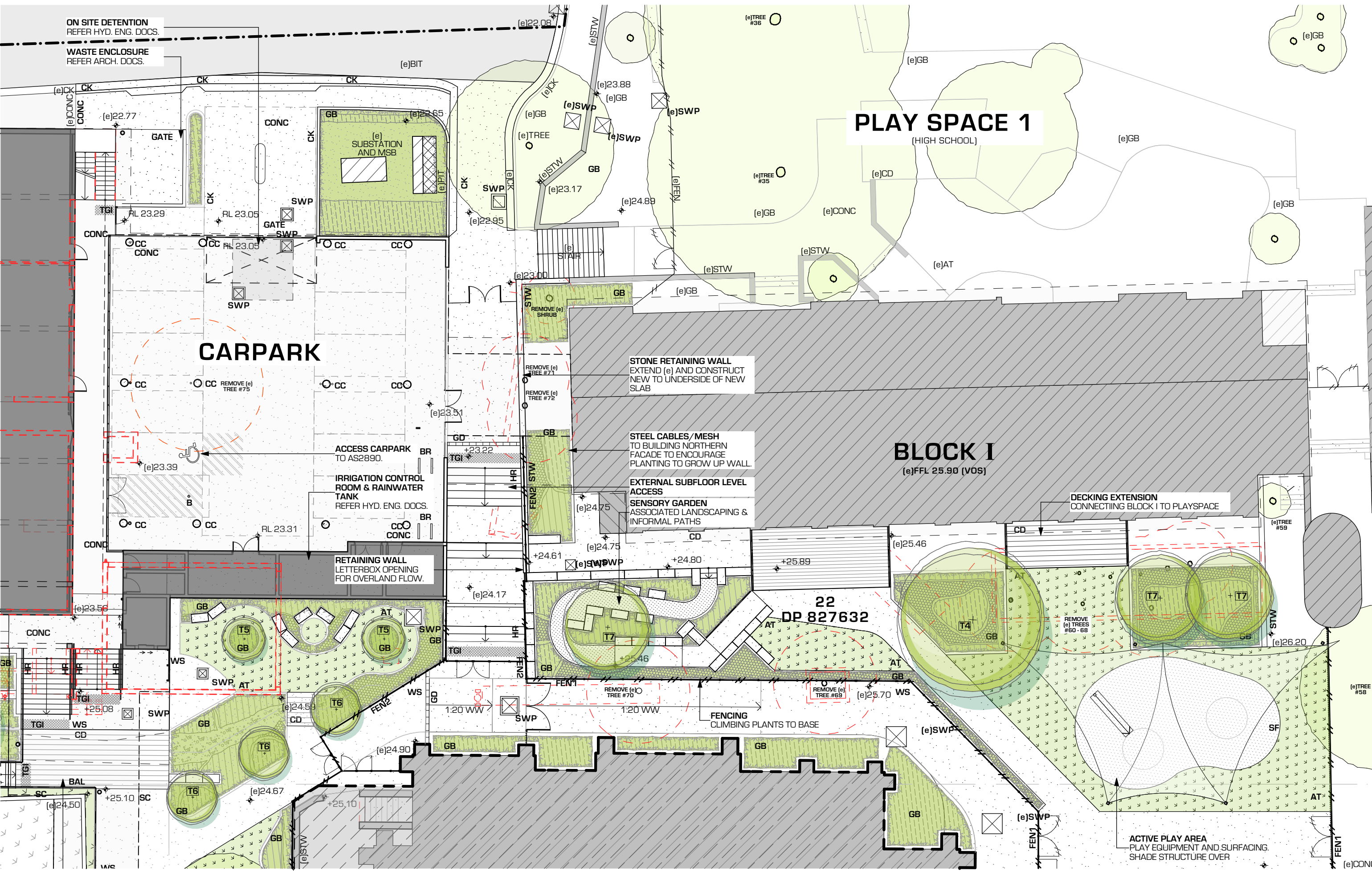
970

DA1810

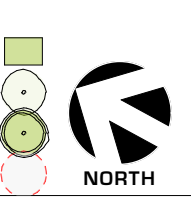
D

DEVELOPMENT APPLICATION

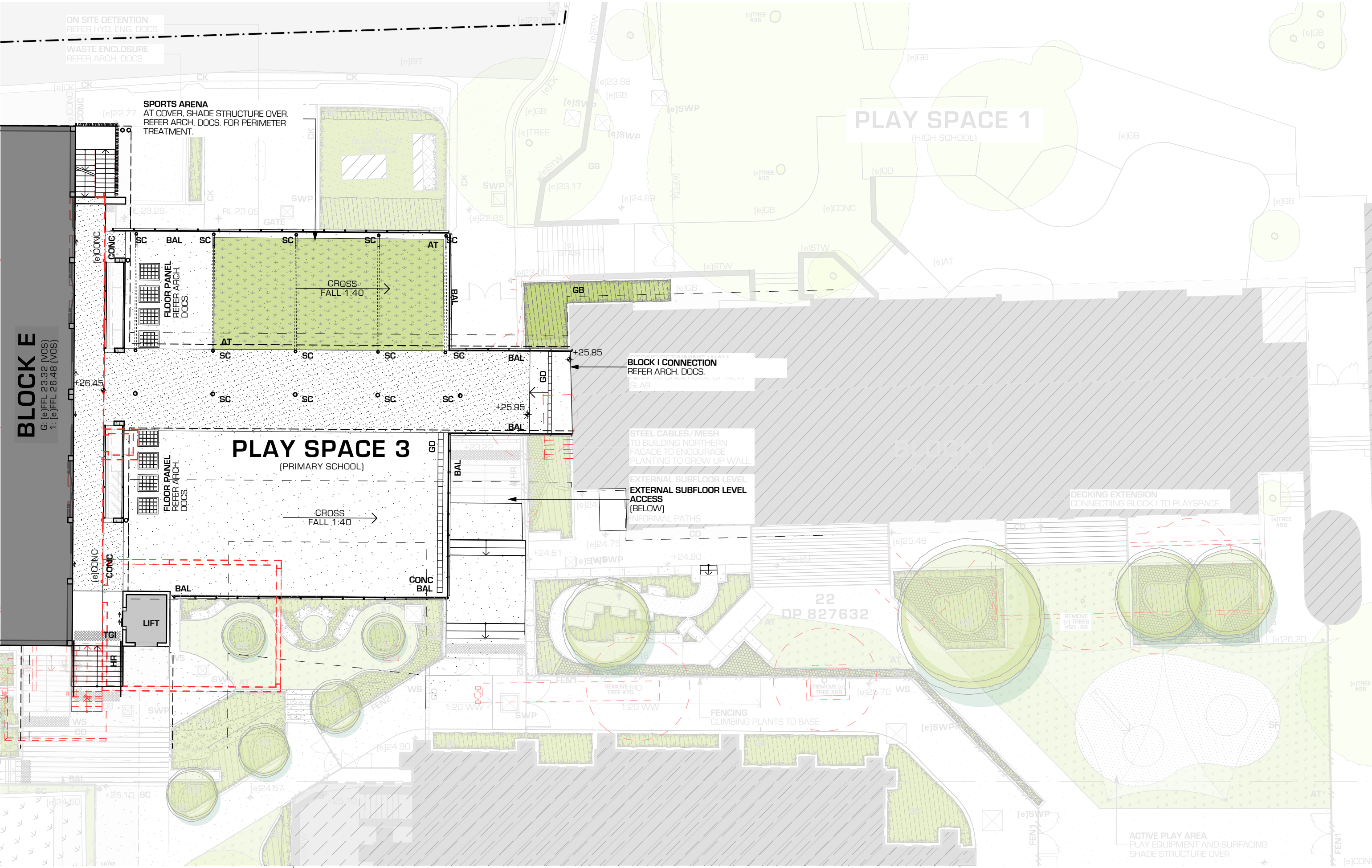
BLOCK E
G: (e)FEL 23.32 (VOS)
1: (e)FEL 26.48 (VOS)

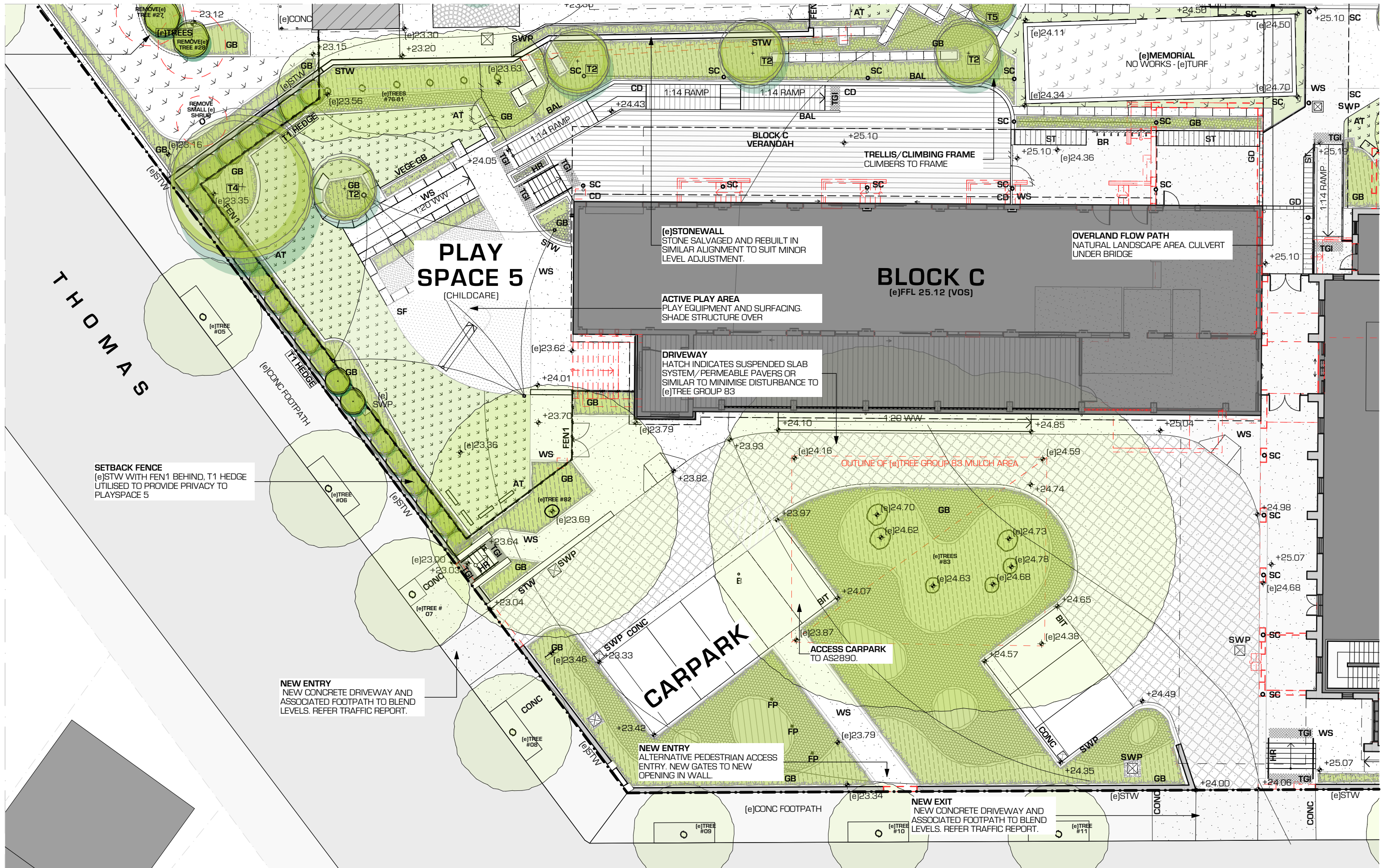


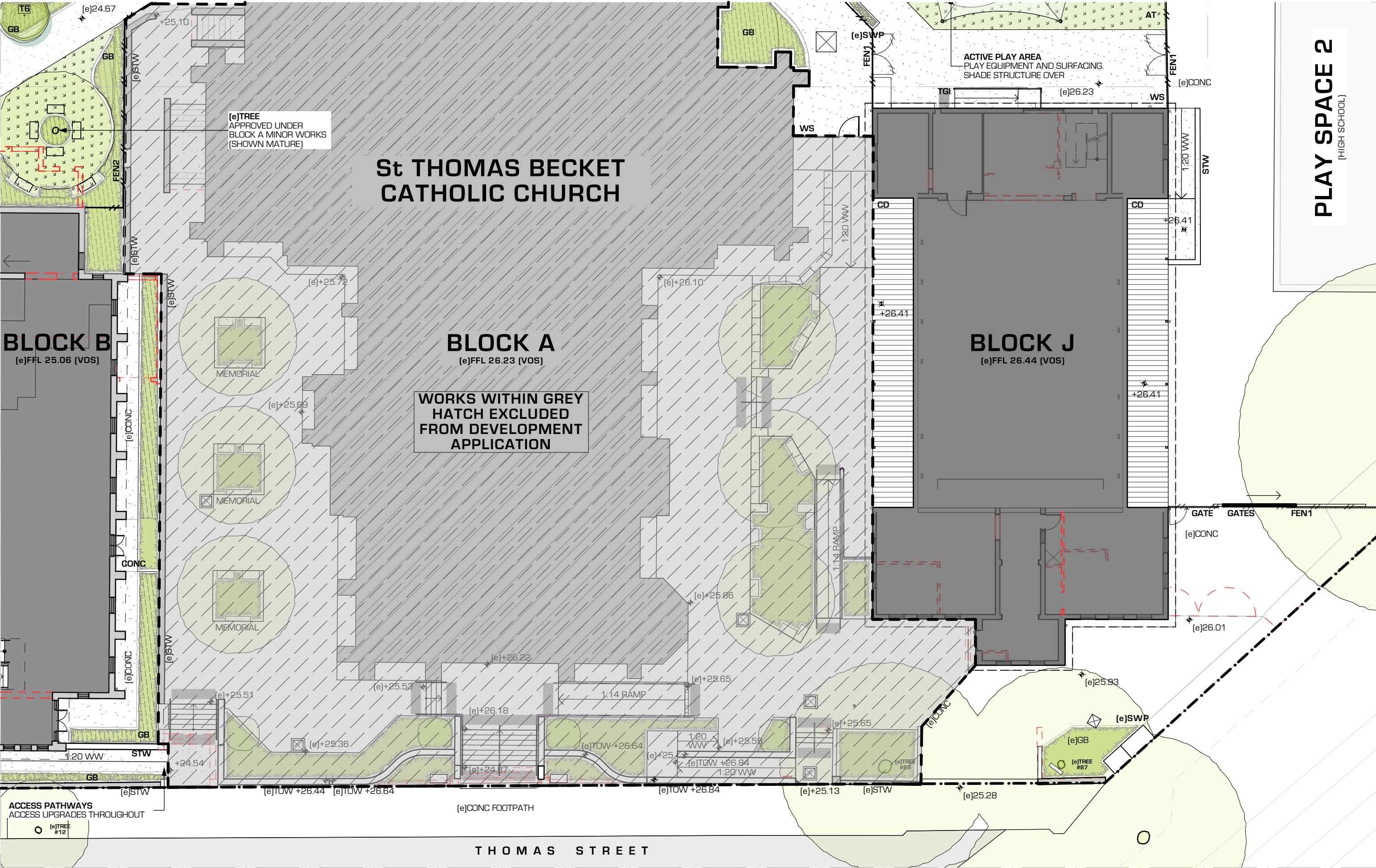
LEGEND		SYMBOL	
NOTE: IF AN (e) IS LOCATED AT THE FRONT OF AN ABBREVIATION IT INDICATES THE ELEMENT IS EXISTING. OTHERWISE IT SHOULD BE ASSUMED AS NEW.			
(e)	EXISTING	GB	GARDEN BED
(r)	RELOCATED	(e)T	EXISTING TREE
(n)	NEW	T	NEW TREE
AT	ARTIFICIAL TURF		
B	BOLLARD		
BAL	BALLASTRADE		
BIT	BITUMEN		
BRK	BRICK		
BR	BIKE RACK		
CC	CONCRETE COLUMN		
CK	CONCRETE KERB		
CD	COMPOSITE DECKING		
CONC	CONCRETE		
DP	DOWN PIPE		
FP	FLAG POLE		
GB	GARDEN BED		
GD	GRATED DRAIN		
MSB	MAIN SWITCHBOARD		
PAV	PAVING		
RW	RETAINING WALL		
SC	STEEL COLUMN		
SCR	SCREEN FENCING		
SF	SOFTFALL		
ST	SEATING		
STW	STONE RET. WALL		
SWP	STORMWATER PIT		
TGI	TACTILE GROUND INDICATOR		
WS	HARD WEARING SURFACE		
WW	WALKWAY (1:20)		



JANE O'HANLON O'HANLON DESIGN - DIRECTOR AILA REGISTRATION NO. 395		DRAWN BY: WLF	SCALE: 1:200 @ A3
13.11.17 REVISED FOR DA		CHECKED BY: TOH, WLF	0
18.10.17 REVISED FOR DA		JOB NUMBER	DRAWING NUMBER
22.08.17 REVISED FOR DA		970	DA1811
11.05.17 ISSUE FOR DEVELOPMENT APPLICATION A			D
DATE	REVISION	ISSUE	DEVELOPMENT APPLICATION

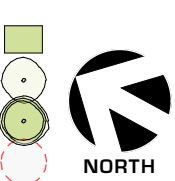




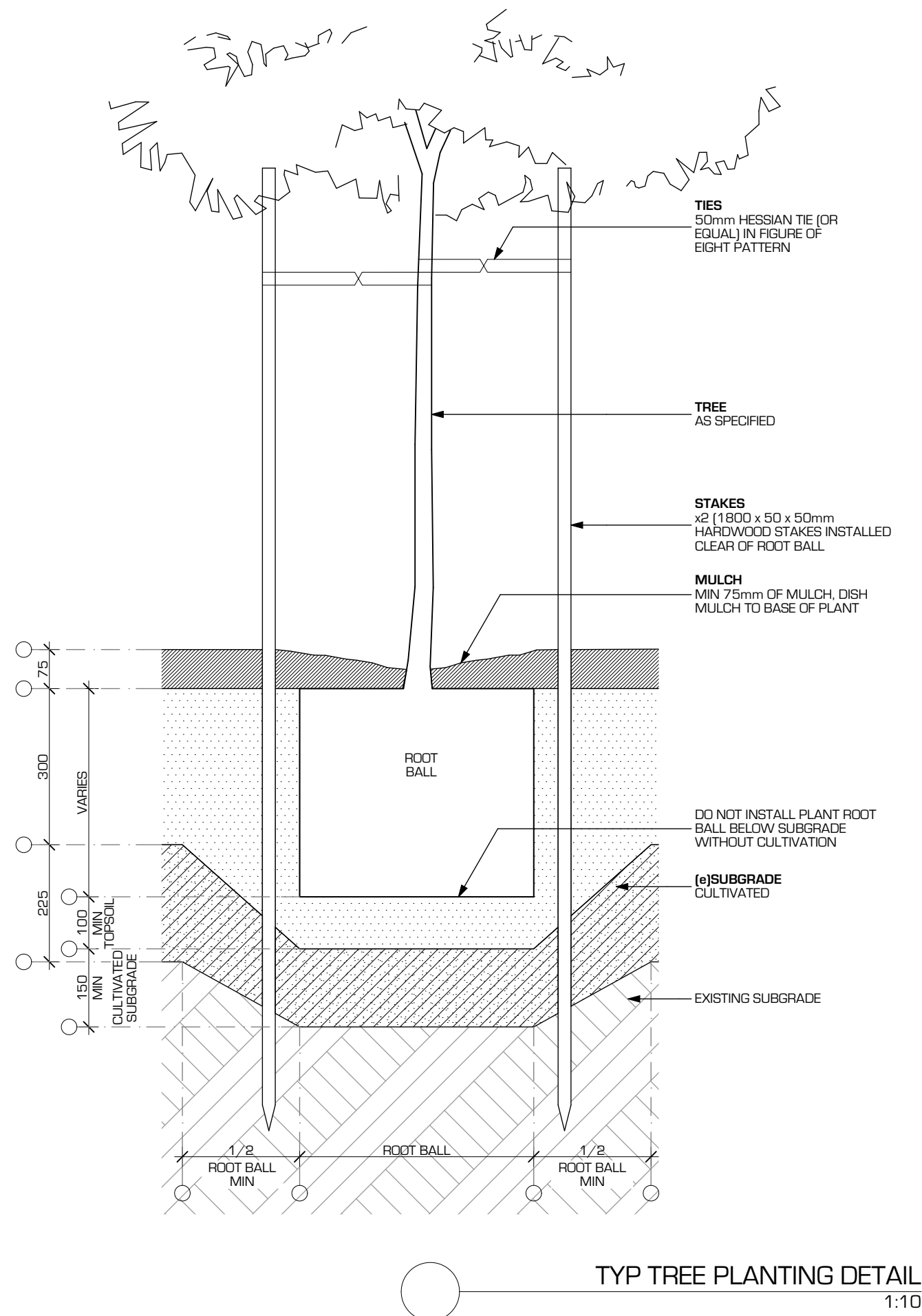
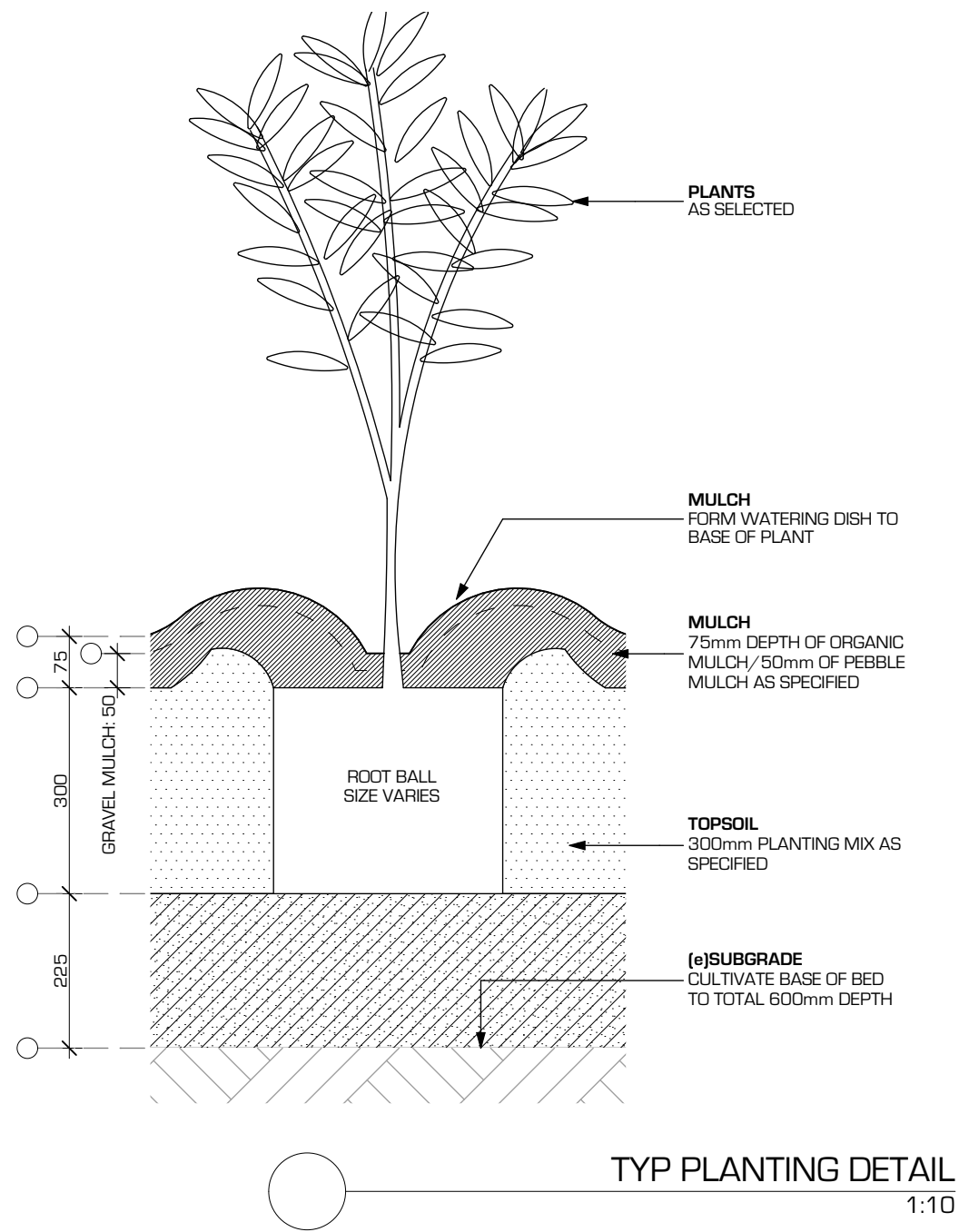
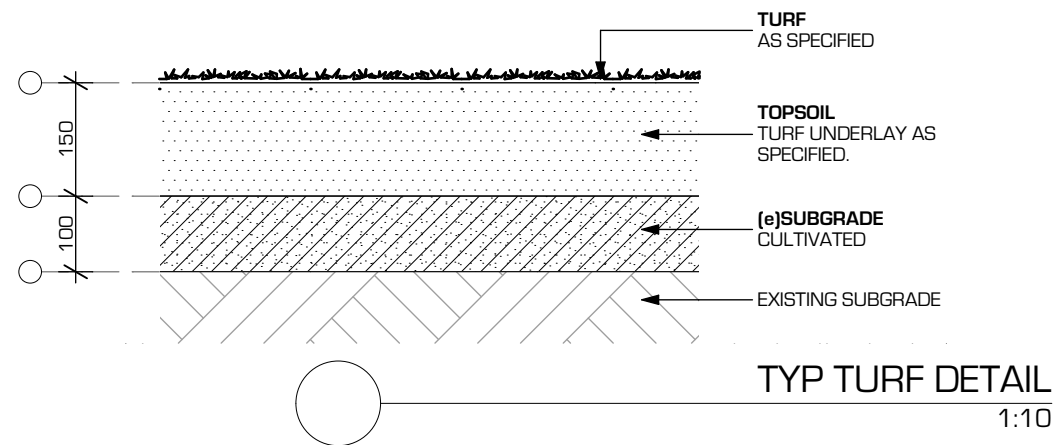


PLAY SPACE 2
(HIGH SCHOOL)

LEGEND		SYMBOL	
NOTE: IF AN (e) IS LOCATED AT THE FRONT OF AN ABBREVIATION IT INDICATES THE ELEMENT IS EXISTING, OTHERWISE IT SHOULD BE ASSUMED AS NEW.			
(e)	EXISTING	GB	GARDEN BED
(r)	RELOCATED	CONC	CONCRETE
(n)	NEW	CD	COMPOSITE DECKING
AT	ARTIFICIAL TURF	DP	DOWN PIPE
B	BOLLARD	FP	FLAG POLE
BAL	BALLASTRADE	GB	GARDEN BED
BIT	BITUMEN	GD	GRADED DRAIN
BRK	BRICK	MSB	MAIN SWITCHBOARD
BR	BIKE RACK	PAV	PAVING
CC	CONCRETE COLUMN	RW	RETAINING WALL
		SC	STEEL COLUMN
		SCR	SCREEN FENCING
		SF	SOFTFALL
		ST	SEATING
		STW	STONE RET. WALL
		SWP	STORMWATER PIT
		TGI	TACTILE GROUND INDICATOR
		WS	HARD WEARING SURFACE
		WW	WALKWAY (1:20)




JANE O'HANLON O'HANLON DESIGN - DIRECTOR AILA REGISTRATION NO. 395				LANDSCAPE PLANS LANDSCAPE PLAN 4	
13.11.17	REVISED FOR DA	D		DRAWN BY: WF	SCALE: 1:200 @ A3
18.10.17	REVISED FOR DA	C		CHECKED BY: TOH, WF	
22.08.17	REVISED FOR DA	B		JOB NUMBER	DRAWING NUMBER
11.05.17	ISSUE FOR DEVELOPMENT APPLICATION A	A		970	DA1814
DATE	REVISION	ISSUE			D
DEVELOPMENT APPLICATION					




LEGEND				SYMBOL		
NOTE: IF AN (e) IS LOCATED AT THE FRONT OF AN ABBREVIATION IT INDICATES THE ELEMENT IS EXISTING, OTHERWISE IT SHOULD BE ASSUMED AS NEW.						
(e)	EXISTING	CK	CONCRETE KERB	SC	STEEL COLUMN	GARDEN BED
(r)	RELOCATED	CD	COMPOSITE DECKING	SCR	SCREEN FENCING	
(n)	NEW	CONC	CONCRETE	SF	SOFTFALL	EXISTING TREE
AT	ARTIFICIAL TURF	DP	DOWN PIPE	ST	SEATING	
B	BOLLARD	FP	FLAG POLE	STW	STONE RET. WALL	
BAL	BALUSTRADE	GB	GARDEN BED	SWP	STORMWATER PIT	NEW TREE
BIT	BITUMEN	GD	GRATED DRAIN	TGI	TACTILE GROUND INDICATOR	
BRK	BRICK	MSB	MAIN SWITCHBOARD	WS	HARD WEARING SURFACE REMOVED TREE	
BR	BIKE RACK	PAV	PAVING	WW	WALKWAY (1:20)	
CC	CONCRETE COLUMN	RW	RETAINING WALL			

PROPOSED PLANTING SCHEDULE

TREES			
KEY	SPECIES	SIZE	STAKING
T1	Acmena smithii 'Hot Flush'	25L	1
T2	Banksia integrifolia	45L	2
T3	Lagerstroemia indica	45L	2
T4	Magnolia grandiflora	400L	3
T5	Prunus sp.	45L	2
T6	Pyrus sp.	45L	2
[r]Trees	Plumeria sp.	[e]	AS REQUIRED
T7	Tristaniopsis laurina	100L	2

SHRUBS			
KEY	SPECIES	SIZE	SPACING
	Acanthus mollis	8L	2/m²
	Clivia miniata	8L	5/m²
	Crinum pedunculatum	8L	3/m²
	Gardenia augusta	8L	3/m²
	Kniphofia sp.	8L	3/m²
	Ligularia sp	8L	5/m²
	Strelitzia sp	8L	1/m²

GROUNDCOVERS/CLIMBERS			
KEY	SPECIES	SIZE	SPACING
	Arctotis hybrids.	TUBE	10/m²
	Casuarina glauca	TUBE	1/m²
	Carpobrotus glaucescens	TUBE	2/m²
	Ficus pumila	TUBE	1/m²
	Gazania hybrids.	TUBE	10/m²
	Grevillea 'Poorinda Royal Mantle'	TUBE	2/m²
	Plectranthus sp.	TUBE	5/m²
	Trachelospermum jasminoides	TUBE	2/m²
	Viola hederacea	TUBE	10/m²
	Vitis sp.	25L	1/m²

GRASSES/STRAPPY PLANTS			
KEY	SPECIES	SIZE	SPACING
	Agapanthus 'Snowball'	3L	4/m²
	Arthropodium cirratum	3L	2/m²
	Dianella caerulea	TUBE	10/lm
	Hemerocallis sp.	3L	3/m²
	Liriope sp.	TUBE	10/lm
	Lomandra sp.	3L	2/m²
	Ophiopogon japonicus	TUBE	10/lm
	Rhoeo spathacea nana (dwarf)	3L	3/m²

- NOTES:
- 1. ALL NEW GARDEN BEDS TO BE INSTALLED WITH NEW TOPSOIL AND MULCH.
 - 2. SOME NEW GARDEN BEDS (GENERALLY THROUGHOUT CENTRE OF SITE) TO BE INSTALLED WITH IRRIGATION.

REMOVED TREE SCHEDULE

(TREES NOTED IN ARBORIST REPORT)			
NO.	SPECIES	SIZE (H x W)	COMMENTS/REASON
27	Elaeocarpus reticulatus	4 x 0.5	To allow accessible carspace
28	Capaniopsis anacardiodes	4 x 1	As above
60	Callistemon salignus	6 x 1	Damage to existing retaining wall, to allow adjustment of levels and to aid in overland flow
61	Callistemon salignus	6 x 2	As above
62	Callistemon salignus	7 x 2	As above
63	Callistemon viminalis	5 x 4	As above
64	Callistemon viminalis	7 x 2	As above
65	Callistemon viminalis	5 x 4	As above
66	Banksia robur	9 x 2.5	As above
67	Melaleuca decora	5 x 2	As above
68	Melaleuca decora	5 x 2	As above
69	Leptospermum petersonii	7 x 4	Damage to existing retaining wall, to allow adjustment of levels and site accessiblity connections
70	Callistemon viminalis	7 x 5	As above
71	Callistemon salignus	7 x 2.5	Damage to existing retaining wall, to allow development and accessible connection between blocks E & I.
72	Callistemon salignus	7 x 2.5	As above
75	Ficus microcarpa var. 'Hillii'	8 x 7	To allow development of block E

- NOTES
- 1. REFER TO ARBORIST REPORT FOR MORE INFORMATION,
 - 2. TREE NUMBERS REFERENCED: REFER TO ARBORIST REPORT.
 - 3. TREE 31 TO BE TRANSPLANTED NEARBY - REFER PLANS